

Recent and current artwork, 2014

Light in Life Artwork, 2000

T e r r y W S c a l e s
N e o - c o n s t r u c t i v i s m

My work is a continuing exploration of colour compositions presented as juxtaposed images constructed from reflected and transmitted light.

The work is presented in both two- and three-dimensional constructs.

Initially my colour work was developed and exhibited in the 1970s and '80s as sculptural structures and performance events for public spaces, funded by the Arts Council of Great Britain and exhibited internationally throughout Europe and at the Singapore International Arts Festival in 1986 (representing the United Kingdom—a great privilege).

Recent work has included a series of colour light-scape images created from the unique richness of reflections seen daily in our urban and domestic environment.

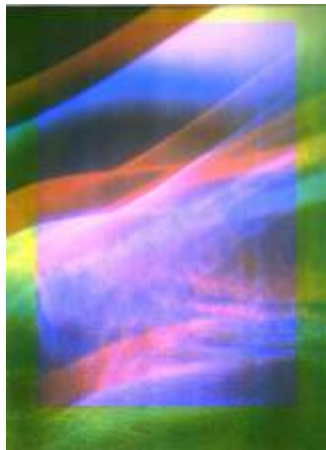
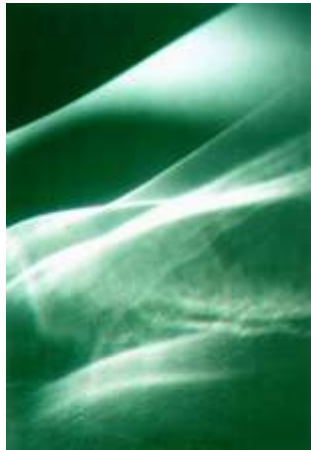
'The extensive use of reflective surfaces in our urban environment on buildings, double-glazing, shop windows and the highly polished bonnets of vehicles, for example, creates a unique and magical world of reflected light and colour.'

Since 1998 my work has evolved, concentrating on the development of mixed-media colour-light images titled illuminaria, computer-generated prints of light reflections titled light-scapes, and sculptural neon and fabric constructs.

At the same time, life painting and drawing has continued to be a constant regenerative pleasure and a fundamental part of my cycle of creative endeavour.

Light in Life artworks presented as:

- Illuminaria: overlays of abstract light forms as constructed light-scape compositions in two-dimensional mixed-media images



Soft shoulders



Dancer in blue



Double glazing

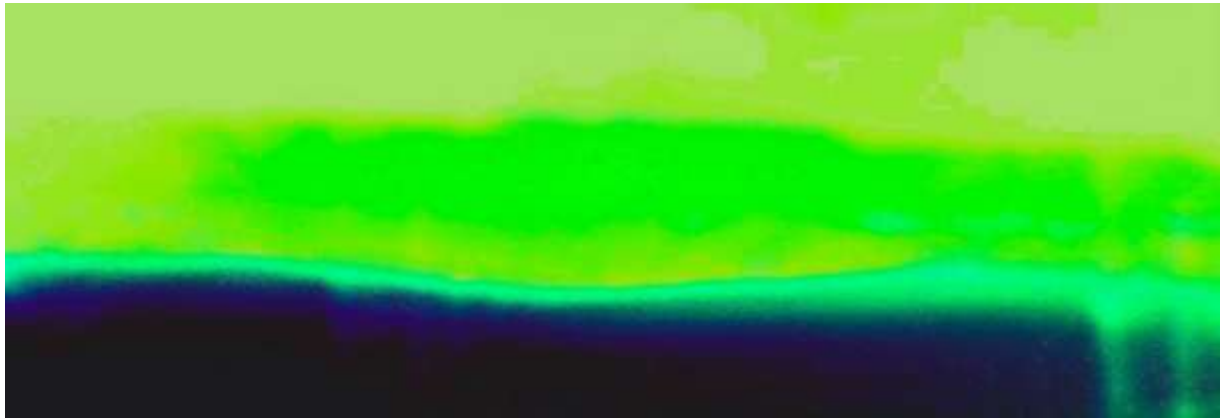


Dancer in amber



Line red to space, magnitude is green

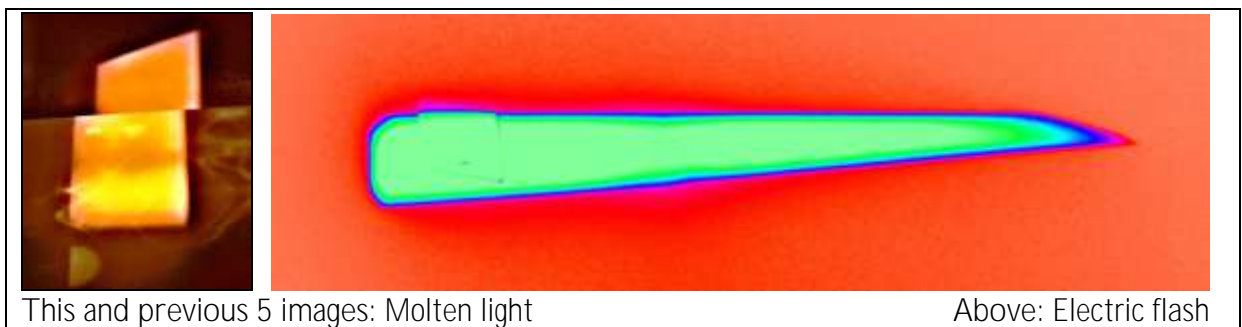
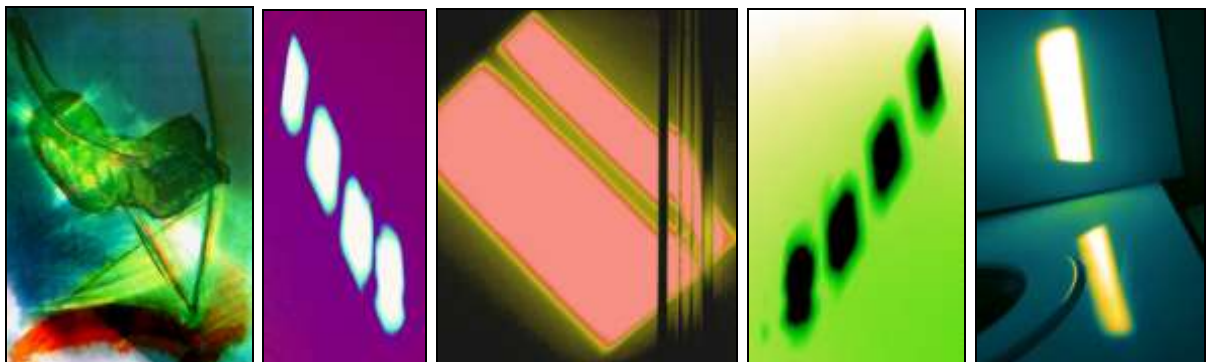
Digital light-scape prints of urban light reflections



Blue horizons 1



After the rain

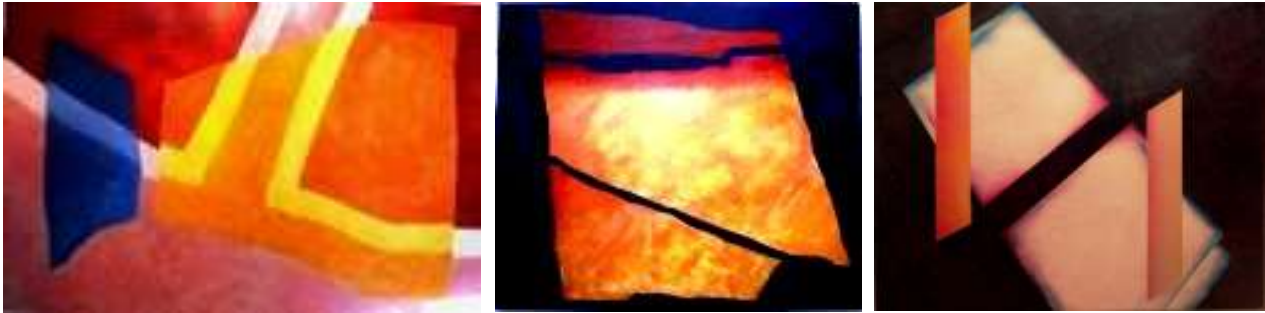


This and previous 5 images: Molten light

Above: Electric flash

Mural canvases:

- A series of architectural-scale paintings for public buildings, based on the illuminaria and light-scapes



Neon-light constructs



Passing by, 2013

Blue Flash 2D, 2003



Life images:

- A series of figurative compositions. Life painting and drawing is a constant pleasure, a creative and regenerative exercise relating form and colour to emotion within composition.



‘The extensive use of reflective surfaces in our urban environment creates a unique and magical world of light and colour...’

Copyright © Terry W Scales